

# Fun With Math

Complete by finding the value of each symbol

$$\text{leaf} + \text{flower} + 1 = \text{seedling}$$

$$\text{tree} + \text{tree} + \text{tree} = \text{seedling}$$

$$13 - \text{tree} = 9$$

$$\text{seedling} - \text{tree} = \text{pear} - 2$$

$$\text{leaf} + \text{flower} + \text{tree} = ?$$

$$\text{pear} - \text{leaf} = 7$$

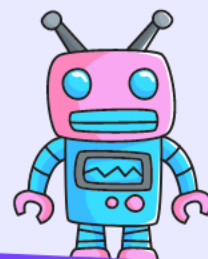
$$\text{leaf} = \underline{\quad}$$

$$\text{flower} = \underline{\quad}$$

$$\text{seedling} = \underline{\quad}$$

$$\text{tree} = \underline{\quad}$$

$$\text{pear} = \underline{\quad}$$



# Answer Key

Complete by finding the value of each symbol

$$\text{leaf}^3 + \text{flower}^8 + 1 = \text{plant}^{12}$$

$$\text{tree}^4 + \text{tree}^4 + \text{tree}^4 = \text{plant}^{12}$$

$$13 - \text{tree}^4 = 9$$

$$\text{plant}^{12} - \text{tree}^4 = \text{pear}^{10} - 2$$

$$\text{leaf}^3 + \text{flower}^8 + \text{tree}^4 = 15$$

$$\text{pear}^{10} - \text{leaf}^3 = 7$$

$$\text{leaf} = \underline{3}$$

$$\text{flower} = \underline{8}$$

$$\text{plant} = \underline{12}$$

$$\text{tree} = \underline{4}$$

$$\text{pear} = \underline{10}$$

