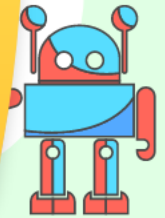


# Fun with Math

Complete by finding the value of each symbol

$$\begin{array}{r} ? = \text{Scooter} + \text{Bus} \\ \text{Car} + \text{Bus} = \text{Bus} \\ \text{Bus} + \text{Bus} = 12 \\ \text{Scooter} + 5 = 9 \end{array}$$

$$\begin{array}{r} \text{Scooter} = \underline{\hspace{2cm}} \\ \text{Bus} = \underline{\hspace{2cm}} \\ \text{Car} = \underline{\hspace{2cm}} \end{array}$$



$$\begin{array}{r} \text{Bag} + \text{Basket} = 7 \\ \text{Basket} + \text{Shopping Cart} = 14 \\ \text{Shopping Cart} + \text{Shopping Cart} = 20 \\ ? = \text{Bag} + \text{Shopping Cart} \end{array}$$

$$\begin{array}{r} \text{Basket} = \underline{\hspace{2cm}} \\ \text{Bag} = \underline{\hspace{2cm}} \\ \text{Shopping Cart} = \underline{\hspace{2cm}} \end{array}$$



# Answer Key

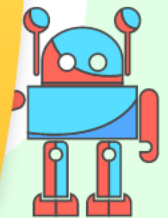
Complete by finding the value of each symbol

$$\begin{array}{l} 10 = \text{motorcycle} + \text{bus} \\ 0 + \text{car} = \text{bus} \\ \text{bus} + \text{bus} = 12 \\ \text{motorcycle} + 5 = 9 \end{array}$$

$$\text{motorcycle} = 4$$

$$\text{bus} = 6$$

$$\text{car} = 0$$



$$\begin{array}{l} \text{shopping bag} + \text{shopping bag} = 7 \\ \text{shopping bag} + \text{shopping cart} = 14 \\ \text{shopping cart} + \text{shopping cart} = 20 \\ 13 = \text{shopping bag} + \text{shopping cart} \end{array}$$

$$\text{shopping bag} = 4$$

$$\text{shopping bag} = 3$$

$$\text{shopping cart} = 10$$

