

# Fun With Math

Complete by finding the value of each symbol

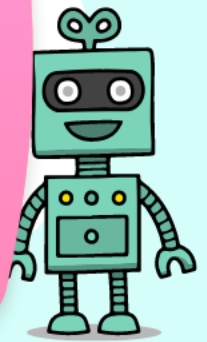
$$\text{Flower} + \text{Flower} = 16$$

$$\text{Tree} + \text{Tree} = 4$$

$$\text{Flower} + \text{Tree} = ?$$

$$\text{Flower} = \underline{\hspace{2cm}}$$

$$\text{Tree} = \underline{\hspace{2cm}}$$



$$\text{Yellow Tree} + \text{Purple Flower} = 16$$

$$\text{Yellow Tree} + \text{Yellow Tree} = 14$$

$$\text{Purple Flower} + \text{Purple Flower} = ?$$

$$\text{Yellow Tree} = \underline{\hspace{2cm}}$$

$$\text{Purple Flower} = \underline{\hspace{2cm}}$$



# Answer Key

Complete by finding the value of each symbol

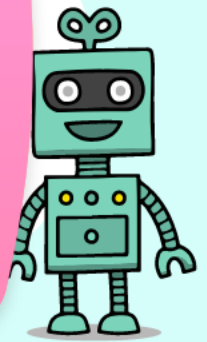
$$\begin{array}{c} 8 \\ \text{flower} \end{array} + \begin{array}{c} 8 \\ \text{flower} \end{array} = 16$$

$$\begin{array}{c} 2 \\ \text{tree} \end{array} + \begin{array}{c} 2 \\ \text{tree} \end{array} = 4$$

$$\begin{array}{c} 8 \\ \text{flower} \end{array} + \begin{array}{c} 2 \\ \text{tree} \end{array} = 10$$

$$\text{flower} = 8$$

$$\text{tree} = 2$$



$$\begin{array}{c} 7 \\ \text{tree} \end{array} + \begin{array}{c} 9 \\ \text{flower} \end{array} = 16$$

$$\begin{array}{c} 7 \\ \text{tree} \end{array} + \begin{array}{c} 7 \\ \text{tree} \end{array} = 14$$

$$\begin{array}{c} 9 \\ \text{flower} \end{array} + \begin{array}{c} 9 \\ \text{flower} \end{array} = 18$$

$$\text{tree} = 7$$

$$\text{flower} = 9$$

